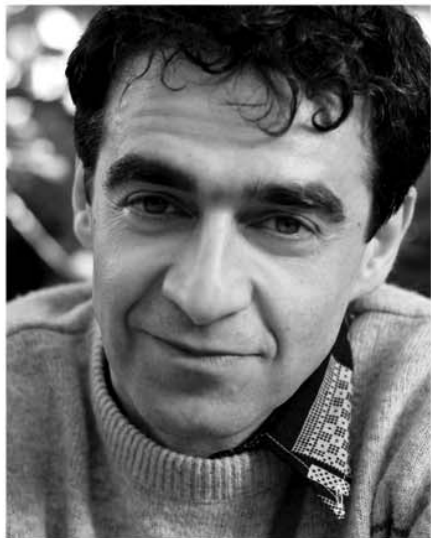
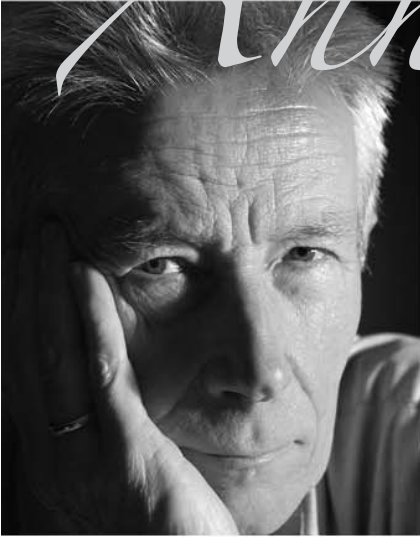


Annual Report 2006



**Renz
Addiction
Counseling
Center**

*Restoring Hope ...
Recovering Lives*

2005-2006
Board of Directors

Laura Newman
President

Lauri Beu
Vice-President

Bob Hansen
Treasurer

Board Members
Susan Angell-Case
Scott Borroughs
Jolie Esposito
Laurianne Dinkheller
Dr. Ian Jones
Jim McClung
Sherry Totzke

Board Member Emeritus
Ron Razowsky

Administration

Jerry Skogmo
Executive Director

Patricia Baker
Director of Prevention

Rob Castillo
Coordinator of EAS

Deb Howe
Director of Marketing & Development

Colleen Koncilja
Director of Clinical Services

Lora Tovar
Coordinator of Administrative Services

45 Years of Services...

It was 1961—45 years ago that Renz Addiction Counseling Center was established as Community Concern for Alcoholism. One of the founders, Jim Renz, still active in the community, recently said, “We’ve really come along way.” He’s right of course. Mr. Renz’s vision of this community-based agency (which was named after him in 1986) being the resource for addiction prevention and treatment in the area has come true. And still we have a way to go.

We at Renz Addiction Counseling Center are committed to reducing drug abuse in the commu-

nities we serve by offering prevention, education, intervention and treatment with expertise and compassion. We are here to provide the tools for a family, an adolescent, an employer, or an adult to combat one of society’s

biggest problems—drug abuse. Decades of research has demonstrated that addiction impacts health care costs, lowers productivity, destroys families, and is a significant factor in all types of criminal activity. This is serious business.

And we take our mission seriously.

Thank you for your continued support. We are proud of our 45 years and our tradition of excellent services. We expect that we will not only continue being the area’s resource for addiction prevention and treatment, but improve upon our services in the next 45 years.



Laura Newman
Laura Newman
President,
Board of Directors



Jerry Skogmo
Jerry Skogmo
Executive Director

Thank you Mary

We’d like to express our gratitude to Mary Conway, secretary and receptionist for our Streamwood location and for the Hanover Township Resource Center. Mary was hired on October 26, 1987 and retired after nearly 19 years with us at the end of August 2006. Mary was the secretary/receptionist for Renz, Family Services, Ecker Center, Community Crisis Center, Safe from the Start, the Peace (homeless) Center and the Epilepsy Foundation as they



Mary is pictured here with Danise Habun, Executive Director of Hanover Township Mental Health Board.

are all part of the Hanover Township Community Resource Center. At her retirement luncheon, Mary expressed her appreciation for Renz Center and stated her longevity was due to the fulfillment she received while working with the great staff of the various agencies, and most of all with “the clients.” We are grateful for her dedication and will miss her.

At the luncheon, Mary received tokens of appreciation from the Mental Health Board and from Renz Center.

Healthier, Safer Community ...because of your support

We are grateful for the continued support of our annual donors and welcomed many new donors this year. The comprehensive services of Renz Center provides many opportunities for prevention education, early intervention and treatment. Each year we find ways to enhance our services to reach out into the community, have a greater impact with our education prevention or breakdown barriers to treatment. We could not continue to make a difference in the lives of our children, adults and families without your financial support. Your donations help restore hope and recover lives of individuals, families and communities. Here are just a few examples of what your dollars are able to do at Renz Center . . .

- *Place life-saving information in the hands of individuals at-risk for HIV/AIDS*
- *Assist a father to examine his gambling addiction, overcome the shame and rebuild trust with his loved ones*
- *Increase an adolescent's self esteem and present alternatives to using drugs and alcohol*
- *Help a daughter to stop depending on marijuana, gain self-confidence, learn coping strategies and return to school*
- *Make a difference in the lives of individuals, families and the communities we serve*

Dollars and Sense

\$20

provides free childcare while a mother attends treatment for her alcoholism

\$25

helps subsidize parenting skills training for a group of female addicts

\$35

provides critical intervention and education to high school students beginning to experiment with drugs

\$50

assist with the cost of a psychiatric assessment for an individual dually diagnosed with severe depression and alcohol abuse.



One golfer demonstrates his skills as he tries to qualify for our Million Dollar Hole-In-One event at the Highlands of Elgin.



Great events have the support of sponsors and volunteers. Pictures L-R are board members Susan Angell-Case, Laura Newman and Lauri Beu (sitting). R-Deb Howe, staff.

We appreciate the participation in our annual events and the generous donations made on behalf of Renz Center. Each donor has a special way of making a difference for Renz Center. We understand there are many requests for help and we are honored to receive your support.

We make every attempt to ensure accuracy in our donor lists. Please contact the office at 847-742-3545 x236 if we have missed or misspelled your name. Lists represent donations and planned giving information received by June 30, 2005.

Donors

Individual and Corporate Support

Bob Ahern	Gilmore Marketing Concepts	Chris Pinello
David Araiza	Giordano's	Mike Piquetti
Craig Armstrong	Golf Club of Illinois	Bryan Polly
Kenneth Arndt	Grand Victoria Foundation	Devon Polly
Associated Bank	Hampton Lenzini & Renwick	Port Edward Restaurant
Christine Awe	Mark & Diane Hanley	Kevin & Marianne Power
Mich Barbezat	Sue Hannula	Provena Saint Joseph Hospital
Best Buy	Thomas Harle	Ron Razowsky
Bruce & Lauri Beu	Harris Bank	Dee Reinhardt
Gary Beu	Jeff Horn	James & Lois Renz
Karen Beyer	Wayne & Bonnie Horne	Tony Riva
Biaggi's Ristorante Italiano	Marv & Marilyn Howe	Brett Robinson
Mark Bierdz	Dave Howe	Gary Ruben
Big Apple Bagels	IHC Construction Companies	Nicholas Salas
Mollissia Bowling	Illinois Tool Works	Ignaccio Salas
John Brooks	J&E Duff, Inc.	Schroeder Asphalt
Brown & Joseph	Jimmy's Charhouse	Chris Schultz
Brunswick Zone	James Johnson	Shodeen Family Foundation
Fitzroy Callender	Billy Jones	Christopher Sipek
Cardunal Savings	John Jozefowicz Jr.	Alan Snyder
James W. Ceithaml	JP Morgan Chase Foundation	St. Mary's Church
Chicago Office Technology Group	Kane County Cougars	Tom Staggs
Chicago Pizza Authority	Kellenberger Electric	Stephen Stark
Citizens for Ruth Munson	Jeff Kerber	Michael Stewart
Citizens for Steve Rauschenberger	Kiwanis Club of Elgin	Stephen Stewart
Claim Jumper Restaurant	Scott Klingberg	David Stojkovich
Jo Lynne Cleveland	Ed Kowalski	Mark Stojkovich
Greg Clough	Lake Michigan Fishing Charters	Streamwood Oaks Golf Club
Corkill Insurance	Jeff Lange	Super Print
Courier News-Jingle Bells	LaSalle Bank	Target
Creekwood Homes	Little Church by the Wayside	Sylvia & Eugene Tester
Mark & Kim Crown	Loews Woodfield Theatres	Sherry Totzke
Emmanuel Cruz	Lisa Lovitsch	Turn Around Team for Steven J. Rauschenberger
James Danowski	Lundstrom Insurance	Matt VanNortwick
Thomas & Diane Detelich	Paul MacDuff	Villa Olivia Country Club
Robert Dickerson II	Ogden & Leanna MacDuff	Robert Vinyard
Rob Dietrich	Manning Silverman & Company	Wal-Mart Foundation
James & Laurianne Dinkheller	Michael McKay	Wal-Mart of Dundee
Eagle Ridge Resort & Spa	Robert Meyers	Wal-Mart of Elgin
Kelly Earney	Michael Walsh & Assoc.	Wal-Mart of St. Charles
EFS Foundation	Debra & John Miller	Matt Walsh
Elgin Women's Club	Elmer Miner	Mike & Sheila Walsh
Entourage	Bill & Sue Moylan	Walter E. Smithe Furniture Store
Troy Evans	Dawn Murphy	Kristin Weck-Farrig
First Community Bank	New Friends & Neighbors	Davin Wedel
Fox Valley Fire & Safety	Nick's Pizza and Pub	Tom & Eva Wedel
Francesca's Campagna	J. David Oatman	Barbara Weiner
G.L.O.B.E.S	Panera Bread	Joseph White
Pat Gallagher	Papa Saverio's Pizzeria	Wendy Withers
Mark Gallagher	Clarence Peterson	Anthony Zeller
	Chris Pignotti	

Mission Statement

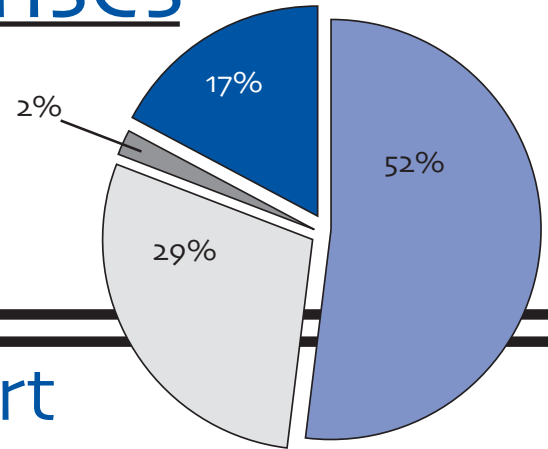
Renz Addiction Counseling Center is a not-for-profit corporation dedicated to the prevention, intervention, and treatment of addictive behaviors and disorders and to factors often associated with addiction. The Center strives to provide the most effective preventative and clinical care in a safe and nurturing environment through a teamwork approach for anyone affected by addiction or addiction related issues.

Renz Center is a non-profit 501(c)3 organization funded in part by:

- Illinois Department of Human Services- Bureau of Substance Abuse & Prevention
- Illinois Department of Human Services-Division of Alcohol & Substance Abuse
- Illinois Department of Public Health
- Far Northwest Suburban United Way
- The Federal Government
- Geneva 708 Board
- Hanover Township 708 Board
- Illinois Department of Public Health
- City of Elgin
- Schaumburg Township 708 Board
- St. Charles 708 Board
- United Way of Elgin
- United Way of St. Charles

2006 Expenses*

Admin Services	17%
Clinical Services.....	52%
Prevention Services	29%
EAS.....	2%

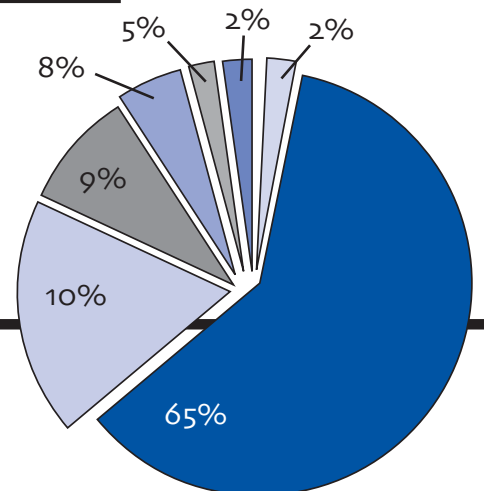


Financial Report

	6/30/06	6/30/05
Current Assets		
All Cash	\$ 533,300	\$ 411,912
Accounts Receivable	\$ 296,649	\$ 240,060
Total Current Assets	\$ 829,949	\$ 651,972
Total Property & Equipment	\$ 1,348,743	\$ 1,128,689
Less Accumulated Depreciation	(\$ 435,140)	(\$ 407,338)
Net Property & Equipment	\$ 913,603	\$ 721,352
Other Assets	\$ 20,551	\$ 25,801
Total Assets	\$ 1,764,103	\$ 1,399,125
Current Liabilities		
Accounts Payable	\$ 76,717	\$ 71,761
Accrued Expenses	\$ 50,494	\$ 43,548
Real Estate Tax Payable	\$ 27,232	\$ 4,747
Security Deposit	\$ 413	\$ 413
Total current Liabilities	\$ 154,856	\$ 120,470
Other Liabilities		
Long-term loans Payable	\$ 456,142	\$ 340,855
Board designated restricted fund balance	\$ 271,085	\$ 0
Unrestricted Fund Balance	\$ 882,020	\$ 937,769
Total Liabilities & Fund Balance	\$ 1,764,103	\$ 1,399,125

2006 Income*

State & Federal Grants	65%
County Grants	8%
Contract Fees/Local Grants	10%
Client Fees & Third Party Payments.....	9%
United Way	5%
Fund Raising/Contributions/Other	2%
Interest & Mgmt Fees	2%



Prevention Program

Prevention continues to be a priority at Renz as we are mindful of the importance of reaching out to our youth and equipping them with accurate, clear information about drugs, alcohol and tobacco. In light of recent research we are also well aware of the business side of the alcohol industry and its effects on underage drinking. Of the estimated \$128.6 billion spent on alcohol in 2001, \$22.5 billion (17.5%) was attributable to underage drinking. In addition, because underage drinkers are more likely to become adult drinkers with alcohol abuse and dependence (almost all —

96.8% — of the adult drinkers with alcohol abuse and dependence began drinking prior to the age of 21 years), early initiation also results in a long-term cash value to the alcohol industry.¹ Therefore, with these financial and other societal influences coming to bear on our impressionable youth, Renz Center feels a responsibility to continue to bring prevention education to the youth and families in schools and within other organizations that share our vision for a healthier, safer community.

Patricia Baker, Director of Prevention

Prevention Highlights:

- Implemented our Project Alert Program in new schools this year at: Canton Middle School, Lakewood School, and Larkin Center School.
- We enjoyed collaborations with the Elgin Resident Officer Program (R.O.P.E.) officers helping to facilitate R.O.P.E.S. Camp, National Night Out and R.O.P.E.S. Family Program.
- We implemented a Beverage Alcohol Sellers and Servers Education Training (BASSET) and Training for Intervention Procedures (TIPS) for local establishments that sell or serve alcohol. The training helps merchants and servers to effectively card individuals to prevent underage drinking and to intervene in high risk drinking situations. We trained 35 people in English and Spanish this year.
- We conducted a community assessment of underage drinking including key informant interviews.
- Conducted a Town Hall meeting about Underage Drinking.
- Served 3200 people and provided 4059 hours of direct service.
- Implemented an HIV Prevention Education Conference.

- Increased services to high risk heterosexuals, including testing of African American men and women at Fox View Apartment Complex in Carpentersville.
- Started a transgendered HIV prevention/education group.

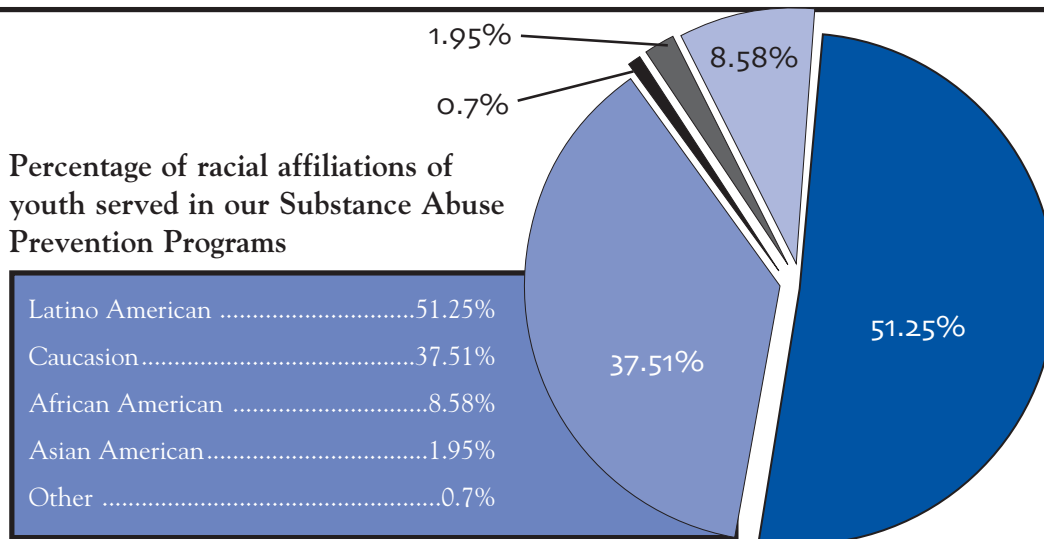
In fiscal year 2007 we look forward to building upon our current programs and have plans for the following:

- Starting a Project Alert program at Carpentersville Middle School.
- Participating on Ruth Munson's After School Program Committee.
- HIV prevention education counseling and testing at unlicensed half-way houses in Elgin.
- Starting a women's program at Fox View apartment complex called Sista's providing HIV prevention.

¹ Source: Adapted by CESAR from Foster, S.E., Vaughan, R.D., Foster, W.H., and Califano, J., Jr. "Estimate of the Commercial Value of Underage Drinking and Adult Abusive and Dependent Drinking to the Alcohol Industry," *Archives of Pediatric and Adolescent Medicine* 160(5):473-478, 2006. For more information, contact Susan Foster at foster@casacolumbia.org.

Choices—some risky...some not. Choices—some "cool"... some not.
 Choices—some dangerous...some not. Choices—some keep you alive...
 SOME DON'T

Helping Youth Make Smart Choices...



Employee Assistance Services

EAS gained a new coordinator this year. Rob Castillo, LCSW, CADC, started in October of 2005. EAS has added new services to the program which include services in Spanish and an expanded menu of trainings for employees. We increased our network of providers which has enabled us to add Spanish speaking services to employees of local companies. In addition, our staff's specialized certifications enable us to provide additional training opportunities to employers, supervisors and all other employees. Many of these trainings are available to non-clients on an "a la carte" basis as well. The trainings that have been added include Substance Abuse Professional (SAP) services as well as Department of Transportation (DOT) training for supervisors.

SAP services are part of the federal mandates related to mandatory drug testing procedures for various "safety sensitive positions." A positive or refusal to test can lead to the need for a SAP evaluation. We are qualified to provide this valuable evaluation to employees and provide the results to both the employee and the employer. In addition, we are certified to train supervisors to meet their requirement for the Department of Transportation. Our team of providers have a unique set of skills, with abilities to meet individual behavioral health needs as well as employee group training requirements. Employee Assistance Services looks forward to serving the business community with our expanded services.



Rob Castillo, LCSW, CADC, Coordinator of EAS



"EAS, Inc. has always been there when one of our employees has needed them and they proved to be an invaluable resource to us in the development of a new Drug-free Workplace policy."

—David H. Hinkston, CEO, Hampton, Lenzini and Renwick, Inc.

Clinical Program

Our clinical program offers an array of services to those who suffer from substance abuse and/or problem and compulsive gambling as well as those who are affected by another's addiction. This past year we:

- provided services to 1051 clients (759 males and 292 females)
- provided 29,107 hours of counseling services
- provided 103 HIV tests through our HIV counseling and testing program

I am extremely grateful for the professionals who comprise our clinical team. They possess an incredible combination of experience and expertise as they help those who have been devastated by addiction. Our clinicians, a group of talented and knowledgeable individuals, continually try



Clients treat themselves to fresh fruits and vegetables

to identify how to improve our programming in order to best serve our clientele. A commitment to helping people change and being a part of helping families heal is the goal for each of our compassionate counselors. We all understand that recovery can offer a life of joy, comfort and serenity as they strive to help their clients begin the process of recovery.

Growth and Challenges

If you haven't visited us lately you may want to do so, and feel free to treat yourself to some fresh vegetables and fruit from our new garden. Yesterday, clients helped themselves to a newly picked bowlful of tomatoes and peppers. Earlier this summer, several adolescent clients planted vegetables while our adult female clients created beautiful

stepping stones and planted fruits. Watering our garden has also been a team effort involving adolescents, adult male and female clients including the dedicated staff who water on the weekends. The garden project has been an incredible experiential learning process that has been amazing to witness.

This Staff possess an incredible combination of experience and expertise as they help those who have been devastated by addiction.

We have learned about team work, taking responsibility, relying on each other, seeing what we can help create, and a little bit about gardening along the way.

This summer clients have also enjoyed playing volleyball while exercising their bodies and their competitive spirit. One memorable game was between clients who attend our Stress Management group against clients who attend our Feelings Exploration group. Some quotes during the competition were, "Oh my you look so stressed because you are losing" and "Oh, don't get so excited and feel so happy because you are "gonna" lose." There were many jokes and laughter throughout the recreational activity where clients were challenged to use teamwork strategies.

New programs:

We have strengthened and expanded new programs that were developed in 2005, — our adolescent intensive outpatient program, and our confidential HIV counseling and testing program. We also began two new programs: 1) Integrated Services for



Staff engage clients in the therapeutic benefits of team sports and gardening.

Child Welfare Substance Abuse Treatment and Intervention Services program and 2) a Drug Education Program in collaboration with the Kane County State's Attorney's Office. The Department of Human Services, Division of Alcohol and Substance Abuse, awarded Renz Center an annual \$20,000 Child Welfare grant, which allows us to offer more specialized and supportive services to youth and adults who are involved with the Department of Children and Family Services. The Drug Education Program is for Kane County Second Chance Program participants. Through this program, held at the Kane County Judicial Center, we educate and help participants understand the addiction process and how their drug and alcohol use is causing consequences in their lives. If they are suffering



Stepping stones line the garden walk

from addiction we, let them know services that are available, encourage them to seek help and make them aware they do not have to suffer alone.

Overall 2006 has been full of challenges, excitement, hope, and faith in people and their ability to change and support each other as they discover a healthier lifestyle. Witnessing the change that happens in our client's lives is rejuvenating. This past year we helped over 1000 people understand how their substance abuse or dependency has hurt their families, friends, and themselves. We have intervened at critical times and have assisted people in choosing a better way to live. Families were changed, healing began, and lives were saved because of our vital work.

Colleen Kencilja
Director of Clinical Services

Collaborations

Our strong desire to collaborate with other community agencies, schools and the Kane County legal system continues. Cooperating with local agencies to provide better access to services and enhance the quality of services is our goal. We appreciate collaborations with:

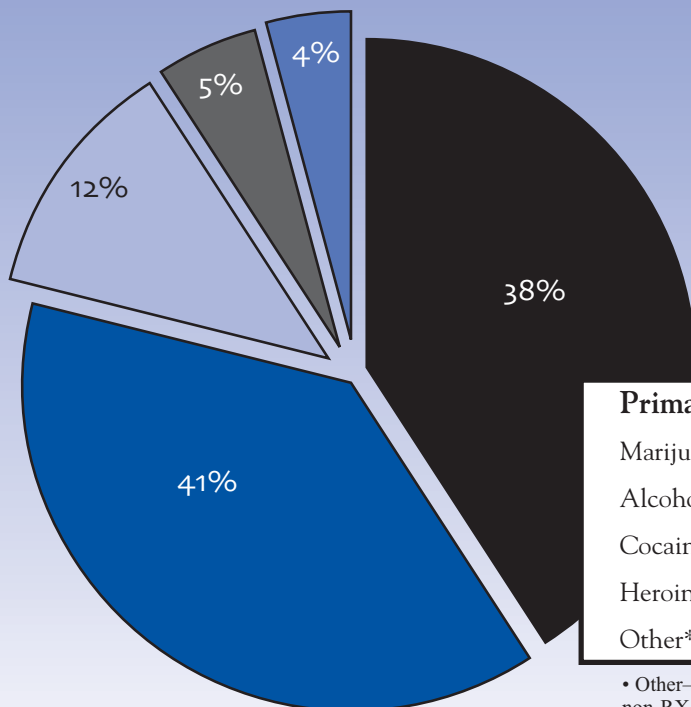
- | | |
|-------------------------------------|-------------------------------------|
| Boys & Girls Club | Hanover Township/Open Gym |
| Boy Scouts, Learning for Life | Kane County Adult Drug Court |
| Canton Middle School | Kane County Juvenile Drug Court |
| Centro de Informacion | Kane County's Second Chance Program |
| Children's Home and Aid Society | Kimball Middle School |
| Community Crisis Center | Larkin Center |
| Community Unit School District #300 | Larkin High School |
| Creekside Elementary School | Larsen Middle School |
| Dundee Crown High School | Lazurus House |
| Dundee Middle School | R.O.P.E. Officers |
| Ecker Mental Health Center | Streamwood High School |
| Elgin Gang & Drug Task Force | Tefft Middle School |
| Elgin High School | Washington Elementary School |
| Elgin Mental Health Center | YMCA of Elgin |
| Elgin PADS | YWCA of Elgin |
| Ellis Middle School | |



Did You Know?

In Fiscal Year 2006, Renz Addiction Counseling Center has:

- Treated 1051 persons from 54 different local cities and communities.
- Provided 29,107 hours of treatment. That's equal to 3.3 years worth of treatment.
- Provided Treatment for more than 10 different types of addictive substances.



Primary Substances	
Marijuana.....	41%
Alcohol	38%
Cocaine	12%
Heroin	5%
Other*	4%

* Other—amphetamines, methamphetamines, MDMA, Ecstasy, non-RX methadone, opiod & other synthetics, other stimulants, prescription opiods.

Program Overviews

PREVENTION PROGRAMS

Implement environmental strategies targeted at promoting healthy behaviors in the community.

Comprehensive bilingual prevention services offered include alcohol, tobacco and other drug prevention; delinquency prevention and conflict resolution.

- Youth Programs – Project Alert! Girl Power!
- HIV/Aids Program – Education/Prevention and Community Outreach.

CLINICAL PROGRAMS

Consist of individual and group counseling, education

and relapse prevention counseling. Continuing care groups are available for those who wish to remain involved in the ongoing recovery process.

- Adolescent Services offers programming specifically for adolescents who may be experimenting with alcohol and/or other drugs and for those who have begun to use substances on a regular basis. Treatment services are also available for those who are abusing substances or are dependent. Treatment is tailored to fit the adolescent client's needs.

- Intensive Outpatient Adolescent and Adult Treatment Programs provides the necessary support, education and structure for abstinence while allowing clients to continue to function in their work and family settings.
- DUI (Driving Under the Influence) Program offers comprehensive services for those who have been charged with a DUI.
- Passage Program for Women provides a safe and supportive environment where women can begin recovery and support each other. Pregnant women have priority.

Free childcare provided.

- Gambling Program includes individual, family and group therapy while educating clients on the components of problem and compulsive gambling.
- Family Program provides education and support to those who are in a relationship with someone who abuses substances or has a gambling problem.

EMPLOYEE ASSISTANCE SERVICES (EAS) contracts with local employers to provide 24-hour assessment, counseling and referrals as a benefit to employees and their dependents with any personal and/or family issues.

PREVENTION OFFICE
1845 Grandstand Place, Suite 118
Elgin, IL 60123
(847) 697-1221
Fax: (847) 697-2719

STREAMWOOD OUTPATIENT
1535 Burgundy Parkway
Streamwood, IL 60107
(630) 837-6445
Fax: (630) 837-7184

ST CHARLES OUTPATIENT
309 Walnut Street
St. Charles, IL 60174
(630) 513-6886
Fax: (630) 513-6892

**EMPLOYEE ASSISTANCE SERVICE
PASSAGE PROGRAM AND
ELGIN OUTPATIENT
ADMINISTRATION**
Two American Way
Elgin, IL 60120
(847) 742-3545
Fax: (847) 697-5583 (Admin. & EAS)
TD: (847) 742-0242
Fax: (847) 742-3559 (Outpatient)
Fax: (847) 697-6583 (Passage)

www.renzcenter.com

